

# ALASKA DIVISION OF HOMELAND SECURITY & EMERGENCY MANAGEMENT



## SITUATION REPORT 24-337 • December 02, 2024

Toll-Free 1.800.478.2337

Anchorage Area 907.428.7000

SEOC 907.428.7100

<p><b><u>SEOC Preparedness Level</u></b> Level 1-Routine Operations</p>	<p><a href="http://ready.alaska.gov">http://ready.alaska.gov</a></p>	<p><b><u>National Terrorism Advisory System:</u></b>  <a href="#">Read the NTAS Bulletin here</a></p>
<p><b><u>Maritime Security (MARSEC)</u></b> Level:1- Minimum Appropriate Security Measures</p>	<p><b>WHO Novel Coronavirus Pandemic (COVID-19):</b> <a href="#">2019 Novel Coronavirus</a></p>	<p><b><u>Alaska Military Installation Force Protection</u></b>  <b><u>Level:</u></b> FPCON Bravo</p>

(Significant changes from previous situation reports are red.)

### **Significant Issues:**

2024 West Coast Storm – Joint Preliminary Damage Assessment  
SEOC deployed a joint Preliminary Damage Assessment team today to Kotzebue with state, FEMA and SBA representatives to develop information to support consideration of a request for federal assistance for the 2024 November West Coast Storm.

### **Department of Health (DOH):**

For current information, see: <https://health.alaska.gov/dph/Pages/default.aspx>  
<https://health.alaska.gov/dph/Emergency/Pages/prepared/default.aspx>

### **NTAS Bulletin:**

The U.S. Department of Homeland Security issued an updated National Terrorism Advisory Bulletin on May 24, 2023. The current and expired bulletins can be viewed at the below link.  
<https://www.dhs.gov/national-terrorism-advisory-system>

### **Travel Alerts and Conditions:**

For current driving conditions, dial 511 or visit: <https://511.alaska.gov/>

### **Barry Arm Landslide / Tsunami Risk:**

For the latest information on the Barry Arm Landslide and Tsunami risk, click here:  
<https://dggs.alaska.gov/hazards/barry-arm-landslide.html>

### **Earthquakes:**

United States Geological Service (USGS) Earthquake Information: <http://earthquake.usgs.gov/>  
National Tsunami Warning Center: <http://tsunami.gov/>

## Alaska Volcanoes:

**Great Sitkin** Alert Level: **Watch** and Aviation Color Code: **Orange**

**Mt. Spurr** Alert Level: **Advisory** and Aviation Color Code: **Yellow**

For Alaska Volcano updates, go to: <https://www.avo.alaska.edu/>

## Air Quality Index (AQI) Advisories:

Stage 1 advisory for Fairbanks in effect.

Stage 2 advisory for North Pole in effect.

For the most up-to-date Air Quality Index Advisories:

<http://dec.alaska.gov/Applications/Air/airtoolsweb/Home/Index>

## Spills of Oil and Hazardous Substances:

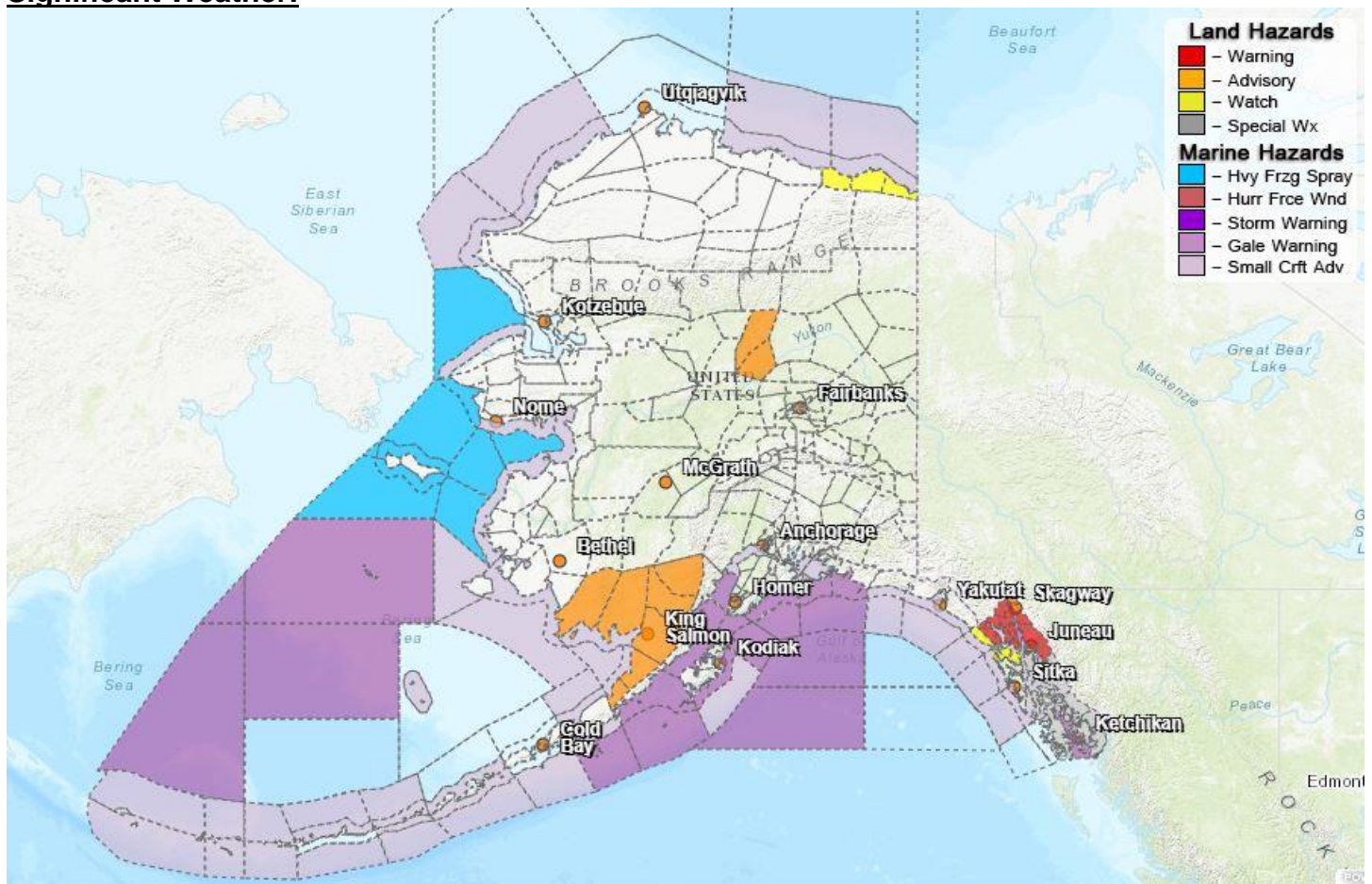
The Alaska Division of Environmental Conservation (ADEC) Spill Prevention and Response page is located at: <https://dec.alaska.gov/spar/>

## Alaska Cyber Security Information:

State Employees may sign up for cybersecurity notifications and alerts at:

<https://oit.alaska.gov/security>

## Significant Weather:



## Winter Weather Advisory:

- **Municipality of Skagway, Glacier Bay** – Until Noon Today.
- **Bristol Bay** – In effect from 3pm Today Tell 5PM Wednesday.
- **Dalton Highway Summits** – Until Noon Tuesday.

**Winter Storm Warning:**

- **Glacier Bay; City and Borough of Juneau – Until Noon Today**
- **Haines Borough and Klukwan – Until 6PM Today**

**Flood Advisory:**

- **Prince of Wales Island – Until 4:15 This Afternoon.**
- **Ketchikan Gateway Borough – Until 7:45 Wednesday**

**Special Weather Statement:**

- **Petersburg Borough; Western Kupreanof and Kuiu Island; Prince of Wales Island; City and Borough of Wrangell; Ketchikan Gateway Borough; Annette Island – Heavy Rain and Strong Wind Expected to Continue**
- **Glacier Bay; Eastern Chichagof Island; Cape Fairweather to Lisianski Strait; Admiralty Island; City and Borough of Juneau – Rain on Snow will Create Slippery Conditions.**
- **Pribilof Islands – Heavy Snowfall and Blowing Snow Through Tuesday Afternoon.**

For more information and the most current Weather, Watches/Warning/Advisories go to: <https://www.weather.gov/arh/>

**Avalanche Conditions:**

Turnagain Pass & Summit Lake: Avalanche danger is Green/Low below 1,00ft and Yellow/Moderate above 1,000ft.

For more information and the most current avalanche conditions go to: <https://alaskasnow.org/>

**The Next Situation Report** will be on **December 03, 2024**. An interim report will be prompted by a significant change in the situation or the threat level. This report is posted on the internet at <https://ready.alaska.gov/sitrep>.

**To register for email distribution, PLEASE go to:**

<http://list.state.ak.us/mailman/listinfo/dhsem.situation.report>.

Direct questions regarding this report to the SEOC at 907-428-7100 or [seoc@alaska.gov](mailto:seoc@alaska.gov).